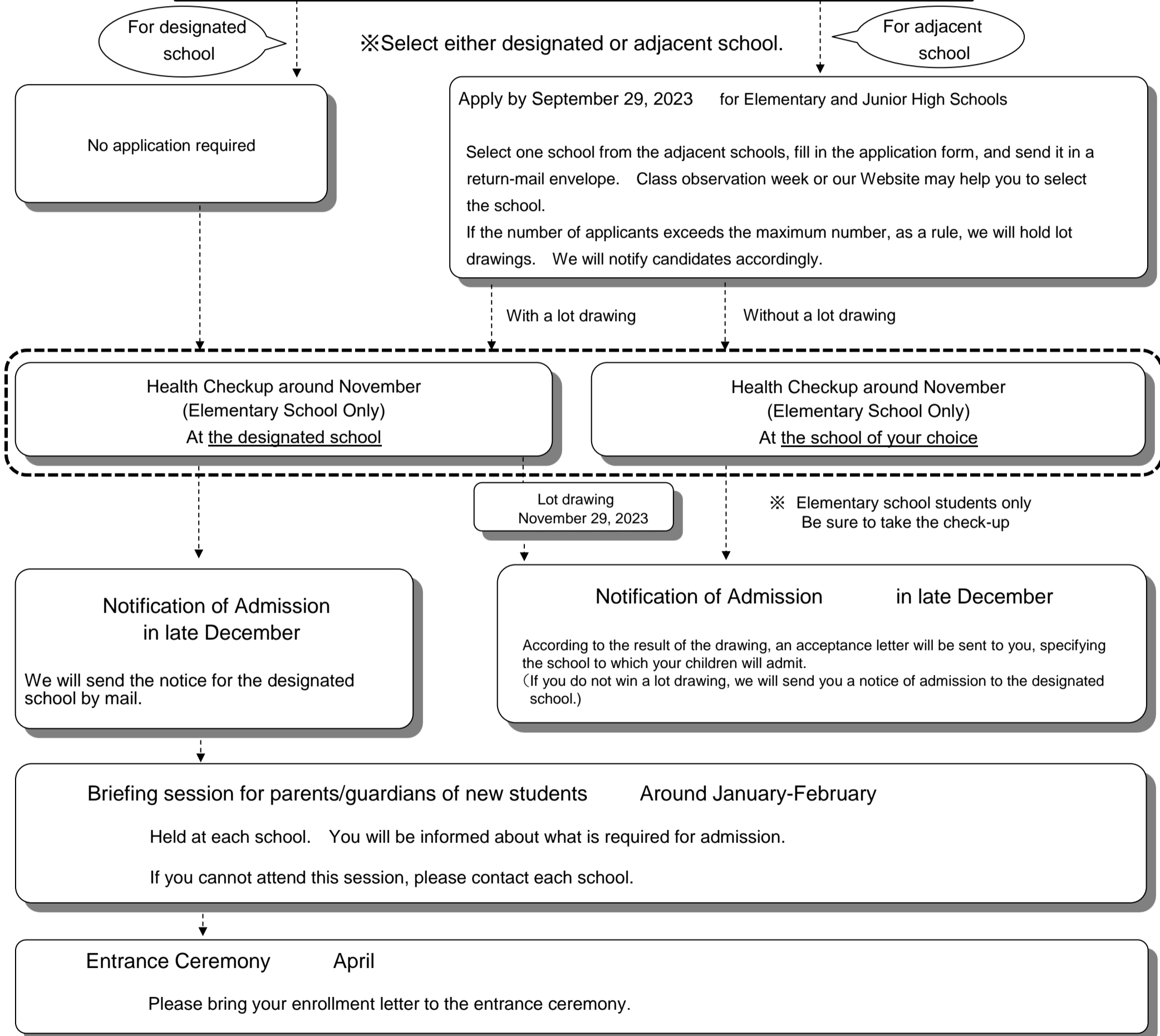


Procedures for Starting School (Non-Japanese Students)

Application Procedure for Enrollment in Public Elementary/Junior High Schools

- ① Place: School Affairs Group, School Affairs Division, Board of Education
#7 counter, 7th floor, 2-45-1 Minami-Ikebukuro, Toshima-ku, Tokyo 171-8422
- ② Required document: Both parent/guardian's and children's
 - Residence card or • Special permanent resident certificate
- ③ Period to apply : By September 29, 2023 (Friday) 8:30 a.m. till 5:15 p.m. (weekdays only)
- ④ Adjacent School Plan: When you want your children to attend the adjacent school,
please ask for the application form when applying for admission.

Before the enrollment process complete, the following procedures are not available.



- ※ While you are consulting on starting school with the Board of Education, we will delay sending the notice.
- ※ If you wish to change the designated school after you receive the notice, you need to apply to change schools. This change will be authorized only when the Board of Education determines so after your interview. (e.g., when siblings, who changed the designated school, will continue to attend the same school after April.) Besides, there may be a limit in school capacity due to the increase of students in the area you wish. (Period to apply: Scheduled for late December 2023 to early January 2024)

(Reference) Approval criteria for change of designated schools

<http://www.city.toshima.lg.jp/353/kosodate/gakko/shochu/tennyugaku/003881.html>